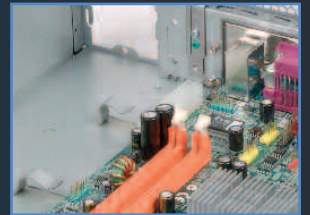
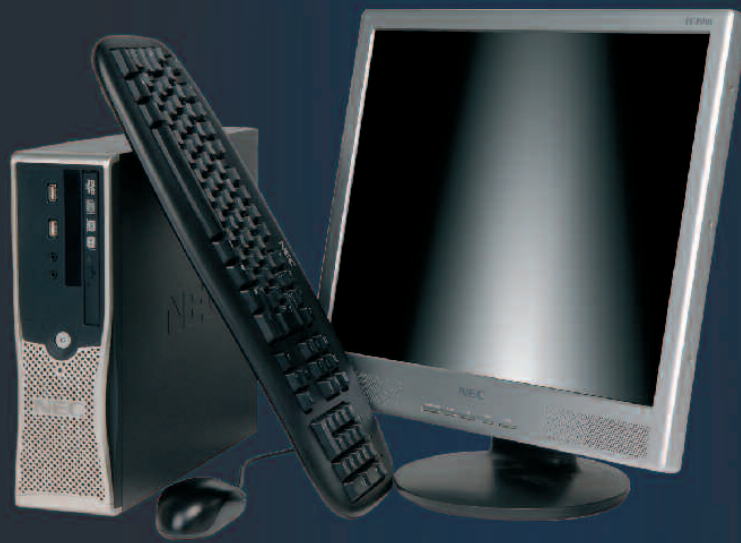


NEC recommends Windows Vista® Business



NEC POWERMATE VL270



High Class Performance at an Affordable Price

- Next Generation Business Desktop
- Excellent Platform Stability
- The Latest Intel Technology
- Configurations Built On Demand

www.nec-computers.com

IT SERVICES AND SOFTWARE

MOBILE/BROADBAND NETWORKING

COMPUTERS

SEMICONDUCTORS

IMAGING AND DISPLAYS

Empowered by Innovation

NEC

NEC POWERMATE VL270

High Class Performance at an Affordable Price

Please consult our web site
www.nec-computers.com

PROCESSOR

Intel® Celeron® D 3XX family, D 4XX family
Intel® Pentium® 4 6XX family
Intel® Core 2 Duo® E 2XX family, E 4XX family,
E 6XX family
Socket LGA 775
512KB internal cache for Celeron® D
2MB internal cache for Pentium® 4
1MB/2MB/4MB internal cache for Core 2 Duo

OPERATING SYSTEM

Genuine Microsoft Windows® XP Professional
Genuine Microsoft Windows® XP Home
Genuine Microsoft Windows® Vista® Home Ready
Genuine Microsoft Windows® Vista® Basic

MOTHERBOARD ARCHITECTURE

Pico BTX Format
Intel® Q963 Chipset
Processor Bus at 533 / 800 / 1066 MHz

BIOS

DMI 2.3 Compatible
Upgradeable by flash

MEMORY

From 512MB to 2GB DDR2-RAM
ECC not supported
2 DDR2 DIMM slots, Dual Channel supported

STORAGE

Optional Floppy Disk 1.44MB (3.5")
Serial ATA 2 HDD controller (300MB/s)
From 80GB to 250GB SATA2 Hard Drive 7200rpm

OPTICAL DEVICES

Combo Drive DVD-ROM/CD-RW 16X/10X/24X/4X
DVD+R9 8X

VIDEO

Integrated Intel® Graphics Media Accelerator 3000®
Up to 256MB shared memory

SOUND

Integrated Azalia audio controller

NETWORK

Integrated Intel Gigabit network connection
with support for Wake On LAN

SECURITY

HDD Recovery Tool included (NEC Instant Recovery)
2 Level BIOS password (Administrator and User)
Anti-theft ring
Kensington lock hole
Anti-theft for keyboard and mouse
Intrusion switch
Integrated hardware monitoring ASIC
Option for Solenoid

I/O PORTS

6 Ports USB 2.0 (4 at rear and 2 at front)
1 serial port + 1 optional
1 parallel port ECP/EPP
1 PS2 mouse port / 1 PS2 keyboard port
1 VGA video port
Audio In/Out ports: 1 mic in, 1 line in, 1 line out
1 RJ45 Port

POWER SUPPLY

SFF: 220V AC - 50/60Hz - 250W
Soft On/Off - Wake On LAN supported

PHYSICAL SPECIFICATIONS

SFF: 90 X 342 X 305 mm (W X D X H)
sizes indicated are in primary usage condition (tower for
small form factor)

CERTIFICATIONS

Vendor Certifications: WLP 2.0 compliant
Mandriva Linux Certification

SOFTWARE

Microsoft Office Ready PC
Adobe Acrobat reader - Sonic RecordNow
McAfee Managed Anti-Virus ViruScan (90 days)
NEC Instant Recovery

WARRANTY

From 1 to 5 year on site warranty

REGULATORY & SAFETY

Regulatory compliance: CE Mark, EN 55022 B, EN
50082-1, EN 60950

MONITORS

NEC VX17 Flat Screen (17", VIS 15.7", 0.27mm dp)
NEC LCD LC17m with integrated speakers
(17", 17" VIS)
NEC LCD LC19m with integrated speakers
(19", 19" VIS)

NEC ULTRACARE SOLUTIONS

Various Service Packages available

- Desktop installation and deployment
- Extended warranties
- Data Transfer
- Network connection

Please contact us for more information

BAYS

SFF chassis:

- 1 X slim 5.25" External bay
- 1 X slim 3.5" External bay
- 1 X 3.5" Internal bay (Used by HDD)

CONNECTORS

1 half height PCI or full height on a riser

High Class Performance at an Affordable Price

The **POWERMATE VL270** features the latest generation of Intel Q963 chipset and support for the new Intel Core 2 Duo processors. The DDR2 memory and Intel GMA 3000 video controller offer ultimate performance for any business use. Available in new Small Form Factor chassis with BTX motherboard, the **VL270** is all you need at the right price



Performance

- Intel® Core 2 Duo processors
- SATA 2 Hard Drives
- Intel® Gigabit network chipset
- Intel® GMA 3000 Video controller



Environment Ecology

- BTX motherboard for better cooling
- Low consumption processors
- Easy to dismantle and to recycle chassis



Technology

- Latest generation of Intel Chipset
- Unique NEC Instant recovery
- Brand new pBTX form factor

